



STATE OF NORTH CAROLINA
DEPARTMENT OF TRANSPORTATION

JOSH STEIN

GOVERNOR

March 20, 2025

J.R. "JOEY" HOPKINS

SECRETARY

ADDENDUM # 1

Contract No. DN01097
TIP No.: N/A
Federal Aid No.: State Funded
WBS Element: 2025CPT.14.07.10881
County: Transylvania
Description: Resurfacing: Pave, Pavement Marking, Traffic Control along various segments of NC-280.

Letting Date: March 25, 2025

Plan Holders

Content Summary: Provision Changes, Bidders Questions/Concerns, Revised Plans

Bidders have posed the questions shown below and the Department has provided the associated responses:

Question/Concern 1: Can you clarify if the surface asphalt for this project is a 9.5C or a 9.5B? The bid item downloaded in the EBSX file and the summary of quantities in the plans shows 9.5C, while the surfacing schedule on the typical section plan sheet shows 9.5B.

Department Response 1: Since this is a Primary route, S9.5C will need to be used.

The above contract has experienced the following revisions:

1. Replace **SP1 G43 Fuel Price Adjustment** on page **G-3 & 4**, with the attached provision
2. Replace **SP6 R25 Price Adjustment - Asphalt Binder For Plant Mix** on page **R-3**, with the attached provision
3. Replace Plans Sheet 3 with the attached **Surfacing Schedule** (this update removed S9.5B and replaced it with S9.5C)

These revisions do not change bid items or the associated quantities.

Mailing Address:
NC DEPARTMENT OF TRANSPORTATION
DIVISION OF HIGHWAYS - DIVISION 14
253 WEBSTER ROAD
SYLVA, NC 28779

Telephone: (828) 331-5200
Fax: (828) 331-5201
Customer Service: 1-877-368-4968

Website: www.ncdot.gov


Location:
253 WEBSTER ROAD
SYLVA, NC 28779

There is no ebsx addenda file associated with this addendum.

Thank you for your attention to this matter.

If you have any questions, please contact the Division Proposal Engineer at (828) 331-5200.

Sincerely,

DocuSigned by:


29BD93927CF24F6...

Jeanette L. White, P.E.

Division 14 Project Team Lead

PROSECUTION OF WORK:

(7-1-95) (Rev. 8-21-12)

108

SP1 G15R

The Contractor will be required to prosecute the work in a continuous and uninterrupted manner from the time he begins the work until completion and final acceptance of the project. The Contractor will not be permitted to suspend his operations except for reasons beyond his control or except where the Engineer has authorized a suspension of the Contractor's operations in writing.

In the event that the Contractor's operations are suspended in violation of the above provisions, the sum of **\$ 1,100.00** will be charged the Contractor for each and every calendar day that such suspension takes place. The said amount is hereby agreed upon as liquidated damages due to extra engineering and maintenance costs and due to increased public hazard resulting from a suspension of the work. Liquidated damages chargeable due to suspension of the work will be additional to any liquidated damages that may become chargeable due to failure to complete the work on time.

NO MAJOR CONTRACT ITEMS:

(2-19-02) (Rev. 8-21-07)

104

SP1 G31

None of the items included in this contract will be major items.

SPECIALTY ITEMS:

(7-1-95)(Rev. 1-16-24)

108-6

SP1 G37

Items listed below will be the specialty items for this contract (see Article 108-6 of the *Standard Specifications*).

Line #	Description
13-14	Long-Life Pavement Markings
15	Permanent Pavement Markers

FUEL PRICE ADJUSTMENT:

(11-15-05)(Rev. 1-16-24)

109-8

SP1 G43

Page 1-82, Article 109-8, FUEL PRICE ADJUSTMENTS, add the following:

The base index price for DIESEL #2 FUEL is **\$ 2.5616** per gallon. Where any of the following are included as pay items in the contract, they will be eligible for fuel price adjustment.

The pay items and the fuel factor used in calculating adjustments to be made will be as follows:

Description	Units	Fuel Usage Factor Diesel
Unclassified Excavation	Gal/CY	0.29
Borrow Excavation	Gal/CY	0.29
Class IV Subgrade Stabilization	Gal/Ton	0.55
Aggregate Base Course	Gal/Ton	0.55
Sub-Ballast	Gal/Ton	0.55
Erosion Control Stone	Gal/Ton	0.55
Rip Rap, Class _____	Gal/Ton	0.55
Asphalt Concrete Base Course, Type _____	Gal/Ton	0.90 or 2.90
Asphalt Concrete Intermediate Course, Type _____	Gal/Ton	0.90 or 2.90
Asphalt Concrete Surface Course, Type _____	Gal/Ton	0.90 or 2.90
Open-Graded Asphalt Friction Course	Gal/Ton	0.90 or 2.90
Permeable Asphalt Drainage Course, Type _____	Gal/Ton	0.90 or 2.90
Sand Asphalt Surface Course, Type _____	Gal/Ton	0.90 or 2.90
Ultra-thin Bonded Wearing Course	Gal/Ton	0.90 or 2.90
Aggregate for Cement Treated Base Course	Gal/Ton	0.55
Portland Cement for Cement Treated Base Course	Gal/Ton	0.55
> 11" Portland Cement Concrete Pavement	Gal/SY	0.327
Concrete Shoulders Adjacent to > 11" Pavement	Gal/SY	0.327
9" to 11" Portland Cement Concrete Pavement	Gal/SY	0.272
Concrete Shoulders Adjacent to 9" to 11" Pavement	Gal/SY	0.272
< 9" Portland Cement Concrete Pavement	Gal/SY	0.245
Concrete Shoulders Adjacent to < 9" Pavement	Gal/SY	0.245

For the asphalt items noted in the chart as eligible for fuel adjustments, the bidder may include the *Fuel Usage Factor Adjustment Form* with their bid submission if they elect to use the fuel usage factor. The *Fuel Usage Factor Adjustment Form* is found at the following link:

<https://connect.ncdot.gov/letting/LetCentral/Fuel%20Usage%20Factor%20Adjustment%20Form%20-%20Starting%20Nov%202022%20Lettings.pdf>

Select either 2.90 Gal/Ton fuel factor or 0.90 Gal/Ton fuel factor for each asphalt line item on the *Fuel Usage Factor Adjustment Form*. The selected fuel factor for each asphalt item will remain in effect for the duration of the contract.

Failure to complete the *Fuel Usage Factor Adjustment Form* will result in using 2.90 gallons per ton as the Fuel Usage Factor for Diesel for the asphalt items noted above. The contractor will not be permitted to change the Fuel Usage Factor after the bids are submitted.

CONSTRUCTION SEQUENCE:

(7-1-95) (Rev. 8-21-12)

560

SP1 R34R

Pave each section of roadway begun in a continuous operation. Do not begin work on another section of roadway unless satisfactory progress is being made toward completion of intersections and all other required incidental work by satisfactorily furnishing additional paving equipment and personnel, except for milling and patching operations.

SHOULDER WEDGE:

(9-20-11)(Rev. 1-16-24)

610

SP6 R03R

Revise the *Standard Specifications* as follows:

Page 6-21, Article 610-8, SPREADING AND FINISHING, add the following after line 40:

Attach a device, mounted on screed of paving equipment, capable of constructing a shoulder wedge with an angle of 30 degrees plus or minus 4 degrees along the outside edge of the roadway, measured from the horizontal plane in place after final compaction on the final surface course. Use an approved mechanical device which will form the asphalt mixture to produce a wedge with uniform texture, shape and density while automatically adjusting to varying heights.

Payment for use of this device will be incidental to the other pay items in the contract.

PRICE ADJUSTMENT - ASPHALT BINDER FOR PLANT MIX:

(11-21-00)(Rev. 1-16-24)

620

SP6 R25

Price adjustments for asphalt binder for plant mix will be made in accordance with Section 620 of the *Standard Specifications*.

The base price index for asphalt binder for plant mix is **\$ 564.38** per ton.

This base price index represents an average of F.O.B. selling prices of asphalt binder at supplier's terminals on **March 1, 2025**.

FINAL SURFACE TESTING NOT REQUIRED:

(5-18-04) (Rev. 2-16-16)

610

SP6 R45

Final surface testing is not required on this project in accordance with Section 610-13, *Final Surface Testing and Acceptance*.

MILLED RUMBLE STRIPS ON ASPHALT CONCRETE SHOULDERS:

(11-19-24)

665

SP6 R56

Revise the *Standard Specifications* as follows:

Page 6-53, Article 665-3 CONSTRUCTION METHODS, lines 20-21, delete and replace the first sentence of the second paragraph with the following:

Provide rumble strips that have finished dimensions of 7 inches \pm 1/2 inch wide in the direction of travel and the length measured perpendicular to the direction of travel as specified in the contract.

Page 6-53, Article 665-4 MEASUREMENT AND PAYMENT, lines 30-33, delete and replace

09/08/09

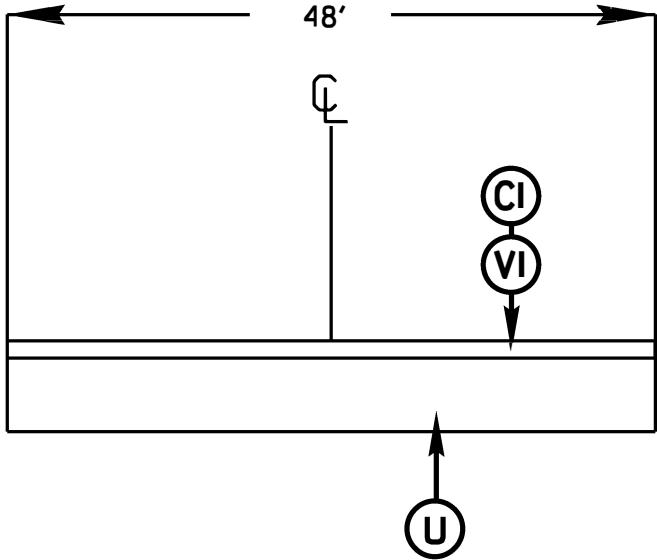
CONTRACT: DN01097

STATE	STATE PROJECT REFERENCE NO.	SHEET NO.	TOTAL SHEETS
N.C.	2025CPT.14.07.10881	3	
STATE PROJ. NO.	F. A. PROJ. NO.	DESCRIPTION	
2025CPT.14.07.10881			

SURFACING SCHEDULE

ITEM NO	DESCRIPTION
C1	PROP. APPROX. 1 1/2" ASPHALT CONCRETE SURFACE COURSE, TYPE S9.5C AT AN AVERAGE RATE OF 165 LBS.PER.SQ.YD
T	SHOULDER RECONSTRUCTION WITH ASB. 2' WIDE UNLESS DIRECTED BY PROJECT ENGINEER - SEE PORJECT SPECIAL PROVISIONS -
U	EXISTING ASPHALT
V1	MILLED ASPHALT PAVEMENT 1 1/2" IN DEPTH IN LOCATIONS AS DIRECTED BY PROJECT ENGINEER

TYPICAL 1



TYPICAL 2

